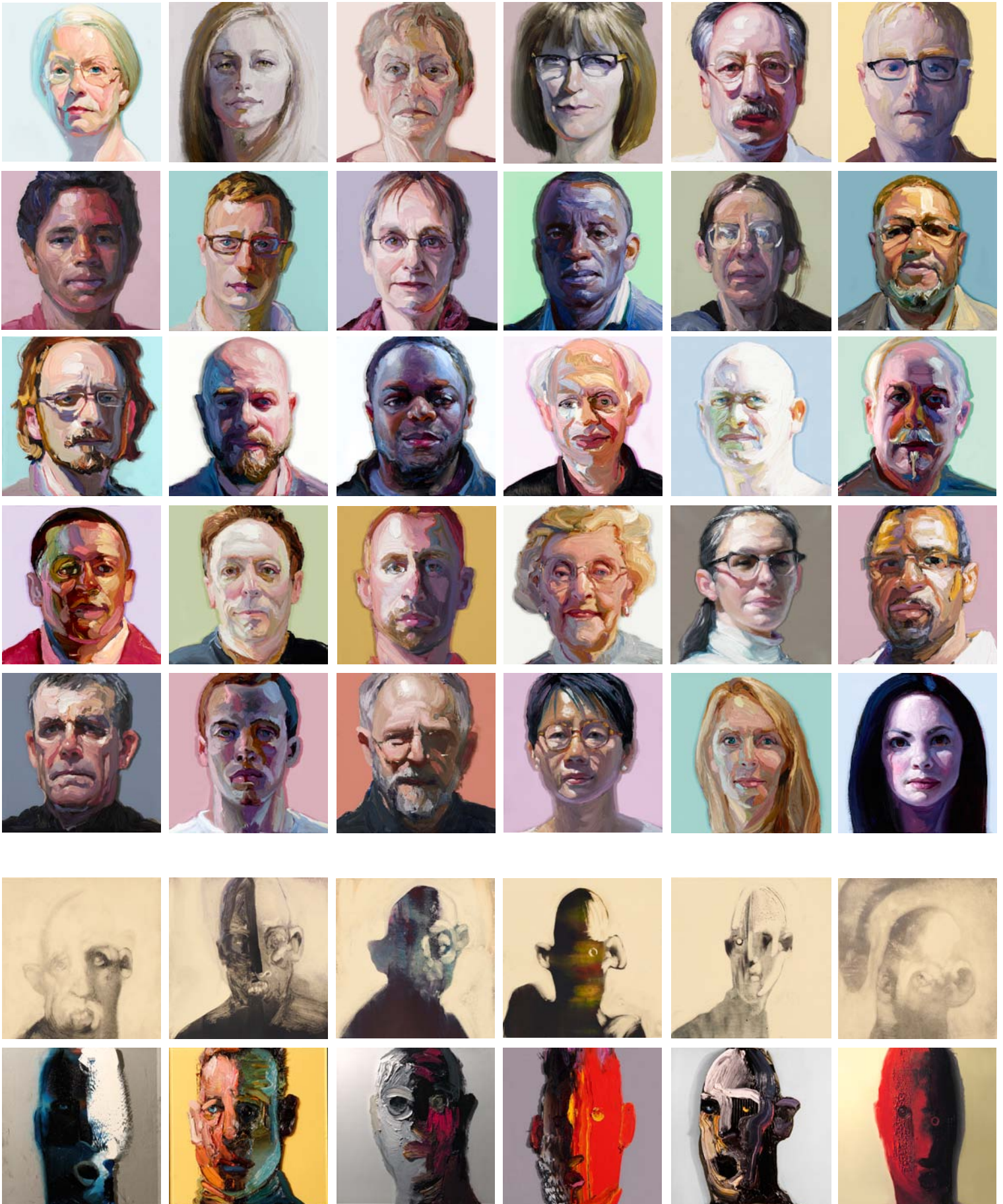


Ray Turner: Population

Supported by
The Markley Group and
Thrive Foundation for Youth



Ray Turner: Population

OVERVIEW

Ray Turner's Population is an evolving, community-engaged traveling exhibition comprised of a series of representational and abstract painted portraits that invite the viewer to contemplate notions of both collective and individual identity.

Turner pursues an innovative and documentary tradition that is a live and ongoing typological study of contemporary society. The exhibition is a work in progress, conceived as an ever-growing survey of the people within the communities to which it travels and, taken as a whole, a developing picture of the countries in which it circulates.

In advance of each museum venue opening, the artist makes a number of trips to the hosting city to set up workshops with local youth, artists, and educational facilities—with the specific goal of reaching out to those who would not otherwise have access to art and art education. During these visits he also (in consultation with the hosting museum) selects local subjects and paints portraits for inclusion in the installation. These new faces are intermixed with the original series, and with related abstract interpretations, to alter the whole and continually update the exhibition as it travels.

Ray Turner's multi-layered installation explores both fundamental notions of anthropological and social archetypes and presents a dynamic visual snapshot of multiple global communities.



Installation view,
Akron Art Museum, 2012

Ray Turner: Population

NUMBER OF WORKS

Flexible per venue: exhibition contains 600 oil-on-glass paintings and monotypes

WORK SIZES

Various: 12 x 12 inches (30 x 30 cm) to 76 x 54 inches (193 x 137 cm)

SPACE REQUIREMENTS

Flexible to gallery size

PARTICIPATION FEE

Contact Alison Darnbrough

SUPPORT MATERIALS

Artist visit and workshop(s)

Publications: currently three catalogues



Intallation view,
Museum of Glass, 2012
Photo credit: Duncan Price

Ray Turner: Population

AUDIENCE INTERACTION & ARTIST WORKSHOPS

Population creates a unique opportunity for venues to engage directly with their visiting audience, as portraits of local citizens will become part of the exhibition and the artist will set up and offer art workshops with local community groups and schools. As the museum staff and the artist draw from a diverse range of local community members to be included in the series, venues are able to expand their attendance and increase the scope of their audience. Curators and museum staff have selected subjects who represent important areas of their communities, from “at risk” kids, to museum guards, to the museum board itself. By announcing the imminent arrival of Population, venues will be able to create a media event in their area surrounding the project and its opening.

Workshop at Hope House,
Alexandria, Louisiana



Stadium High School
Tacoma, Washington



Workshop at the Louisiana National
Guard Youth Challenge Program,
Alexandria, Louisiana

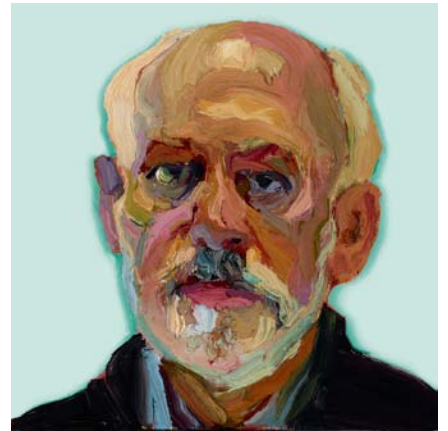


Ray Turner: Population



POPULATION is an installation-based body of work. It is designed specifically for the galleries of each museum. The background colors are laid out in a grid, then painted on the walls, emphasizing color theory, and diversity in ethnicities.

Ray Turner: Population



Ray Turner: Population



“Turner’s brushwork is fast, free, rule-bending.... Population is a fine, ambitious, community-embracing work.”

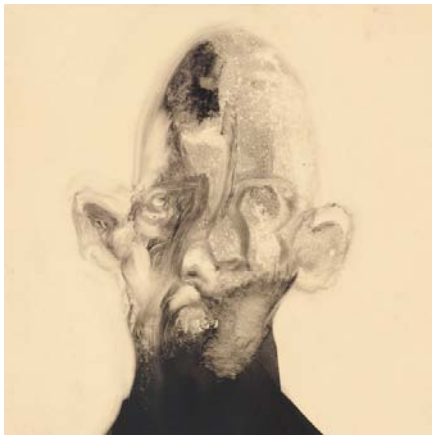
— Seattle Times

“...even as [the portraits] form convincing likenesses, they confront us touch by touch with the unlikeness of paint to the fugitive focal points by which we recognize a person in a face.”

— San Francisco Chronicle



Ray Turner: Population



Ray Turner: Population



“...[Turner] breaks through the academic constraints of realistic portraiture and opts for wild, gestural, semi-abstract images, threatening to shatter the very glass on which they’re painted.”

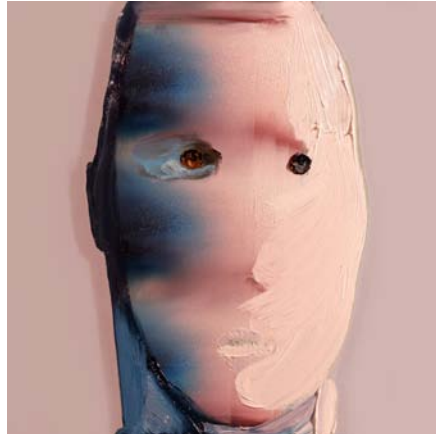
— Huffington Post

“Each portrait is a masterpiece in its own right, yet collectively the portraits deftly capture the shared beauty of human imperfection.”

— ArtDaily



Ray Turner: Population



Ray Turner: Population



Installation View, Wichita Art Museum, 2013

CONTACTS

NATIONAL • INTERNATIONAL CURATOR
ALISON DARNBROUGH
aldarnbro@gmail.com
312.632.9826

CLARE MASSEY
STUDIO MANAGER
clare.rayturnerstudio@gmail.com
626.449.7216

Ray Turner: Population



Installation View, Long Beach Museum, 2011

Ray Turner lives in Pasadena, California, where he earned his BFA, then worked for thirteen years as a professor of painting and drawing at the Art Center College of Design. His work has been seen throughout Southern California as well as in San Francisco, New York, Miami, Chicago, Boston, and Berlin.

Population is sponsored by
Dottie and Bob King, Thrive Foundation for Youth
Jeff Markley, The Markley Group

Ray Turner: Population



REVIEWS AND NEWS

Herald-Dispatch, "Population", Dave Lavender, October 13, 2013
The Wichita Eagle, "Appreciating Face Time", Alice Mannette, May 26, 2013
Weekly Volcano, Alec Clayton, January 3, 2013
Seattle Times, Michael Upchurch, December 16, 2012
Seattle Times, Michael Upchurch, December 2, 2012
Weekly Volcano, Alec Clayton, November 20, 2012
Tacoma News Tribune, Rosemary Ponnekanti, November 16, 2012
Tacoma Weekly, Kate Burrows, November 07, 2012
Art Daily, November 06, 2012
Puyallup Tribal News, Kate Burrows, August 15, 2012
Bellingham Herald, Dean Kahn, June 18, 2012
Akron Beacon Journal, Dorothy Shinn, March 11, 2012
West Side Leader, Roger Durbin, March 08, 2012
LA Weekly Shana Nys Dambrot, August 23, 2011
KUSC "Arts Alive" Interview, Brian Lauritzen, July 9, 2011
Huffington Post, Edward Goldman, July 07, 2011
Art Knowledge News, July 04, 2011
Art Daily, July 03, 2011
All Art News, July 03, 2011
Campus Circle, Cindy Kyungah Lee, June 22, 2011
Artweek LA, June 20, 2011
ThisWeekInLongBeach.com, May 24, 2011
ArtSceneCal.com, Diane Calder, May 12, 2011
San Francisco Chronicle, Jesse Hamlin, November 25, 2010
Coast Magazine, Roberta Carasso, March 2010
San Francisco Chronicle, Kenneth Baker, January 9, 2010
Poets and Artists Magazine, Grady Harp, October 2009